

# BRIERWOOD

CRAFTSMAN (B)



COASTAL (C)



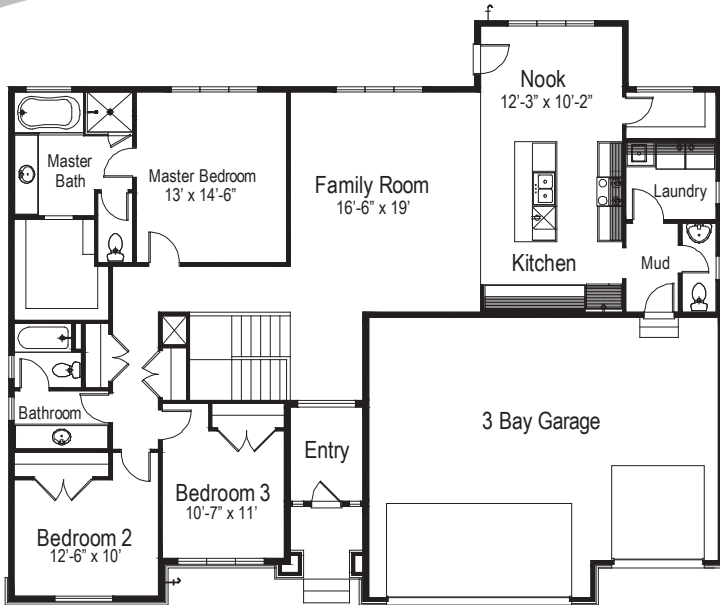
**CRESCENT**  
CONSTRUCTION

[www.crescentbuilding.com](http://www.crescentbuilding.com)



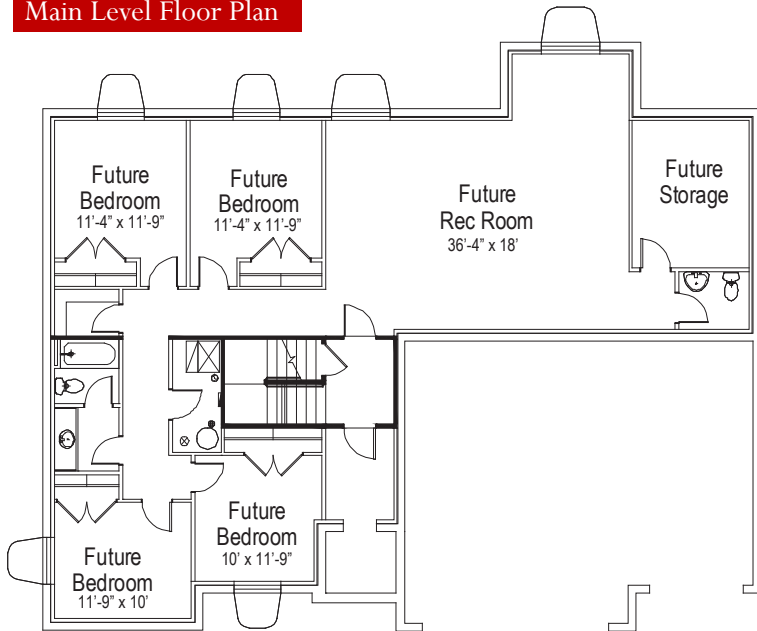
Disclaimer: Actual models may differ from the images shown here. Optional items not included in base price may be shown. Speak with a Crescent Construction Representative for additional information. Areas and dimensions are approximate.

# BRIERWOOD



Finished Square Feet: 2020  
Total Square Feet: 3920  
Bedrooms: 3-7  
Bathrooms: 2.5-3.5  
Garage: 3 Bay Garage  
Levels: 1 Floor + Basement

Main Level Floor Plan



Basement Floor Plan



[www.crescentbuilding.com](http://www.crescentbuilding.com)



Disclaimer: Actual models may differ from the images shown here. Optional items not included in base price may be shown. Speak with a Crescent Construction Representative for additional information. Areas and dimensions are approximate.